



Orphan Drug Report 2018

Quick facts and highlights



Download our Report
www.evaluategroup.com/orphandrug2018

Trends in Sales

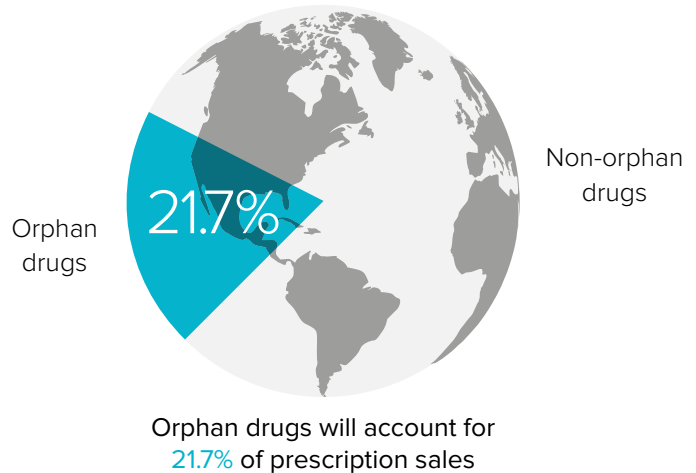
Worldwide orphan drug sales forecast to be

\$262 Billion

Compound Annual Growth Rate (CAGR) for orphan drugs will be

2x non-orphan drug market

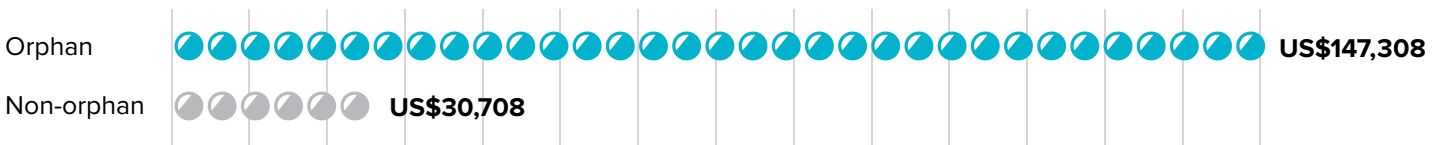
Sales 2024



Leader Board: 2024

Sales	Celgene	Celgene to retain lead position in orphan drug sales in 2024
Drug	Keytruda (pembrolizumab)	Keytruda (Merck & Co) is the overall leading orphan drug in 2024
MVD	Lanadelumab	Lanadelumab (Shire) is the most valuable R&D drug

Mean cost per patient per year 2017 (top 100 orphan and top 100 non-orphan drugs)



EvaluatePharma estimates that the mean cost per patient per year in 2017 for an **orphan drug** was **\$147,308** compared to **\$30,708** for a **non-orphan drug**

The mean price of the **top 100 USA orphan drugs** (ranked by sales) grew at a **CAGR of +5.2%** from 2013 to 2017 compared to **+9.2%** for the top 100 non-orphan drugs

Oncology is the leading therapy area for 2024

Blood is second leading therapy area

Orphan R&D drugs account for **36%** of worldwide pipeline sales forecast in 2024, growing at a **CAGR of +133%** from 2018 to 2024



Evaluate is the trusted provider of commercial intelligence including product sales and consensus forecasts to 2024 for commercial teams and their advisors within the global life science industry. We help our clients make high value decisions through superior quality, timely, must-have data and insights, combined with personalised, expert client support.

EvaluatePharma[®] delivers exclusive consensus sales forecasts and trusted commercial insight into biotech and pharmaceutical performance.

 [@EvaluatePharma](https://twitter.com/EvaluatePharma)

EvaluateMedTech[®] sets a new standard in commercial analysis and consensus forecasts of the global medical device and diagnostic industry.

 [@EvaluateMedTech](https://twitter.com/EvaluateMedTech)

EvaluateClinical Trials[®] delivers unique clinical trial intelligence expertly curated to efficiently analyse the global clinical trial landscape.

 [@EPClinicalTrial](https://twitter.com/EPClinicalTrial)

EP Vantage an award winning editorial team, provides daily commentary and analysis with fresh perspectives and insight into current and future industry trends.

 [@EPVantage](https://twitter.com/EPVantage)

Evaluate Custom Services provides customised solutions to help you access, analyse and manage the information you need to support effective decision-making.

The Evaluate services enable the life science community to make sound business decisions about value and opportunity.

www.evaluate.com

Evaluate Headquarters

Evaluate Ltd.
11-29 Fashion Street
London E1 6PX
United Kingdom
T +44 (0)20 7377 0800
F +44 (0)20 7539 1801

Evaluate Americas

EvaluatePharma USA Inc.
60 State Street, Suite 1910
Boston, MA 02109
USA
T +1 617 573 9450
F +1 617 573 9542

Evaluate Asia Pacific

Evaluate Japan KK
Akasaka Garden City 4F
4-15-1 Akasaka, Minato-ku
Tokyo 107-0052
Japan
T +81 (0)80 1164 4754